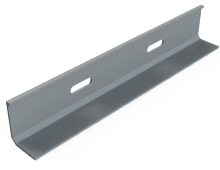


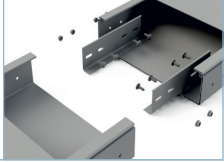
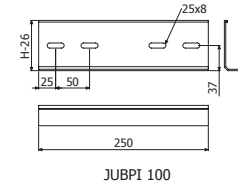
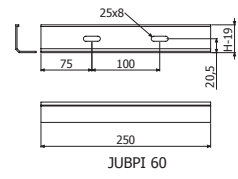


**JUBPI**

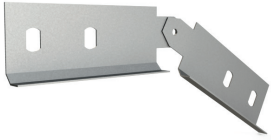


	H		PVC M1	
	mm	inch	REF.	kg/ud
JUBPI 60	60	2 3/8"	2/2061	0,05
JUBPI 100	100	4"	2/2062	0,09

JUBPI 60 --> 2/100 x CTBP (2/10020)  
JUBPI 100 --> 4/100 x CTBP (2/10020)

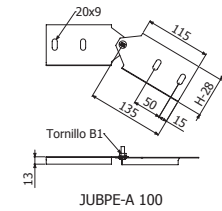
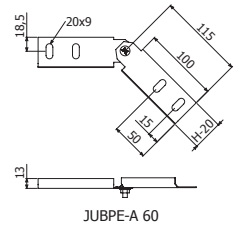


**JUBPE-A**

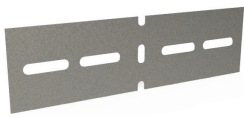


	H		i304	
	mm	inch	REF.	kg/ud
JUBPE-A 60	60	2 3/8"	2/5036	0,09
JUBPE-A 100	100	4"	2/5037	0,16

4/100 x CTBP (2/10020)

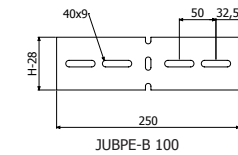
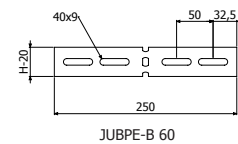


**JUBPE-B**

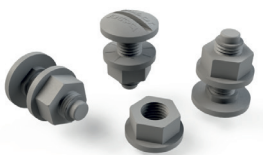


	H		i304	
	mm	inch	REF.	kg/ud
JUBPE-B 60	60	2 3/8"	2/3520	0,13
JUBPE-B 100	100	4"	2/5038	0,22

4/100 x CTBP (2/10020)



**CTBP**



CTBP-100	PVC M1	
	REF.	kg/ud
	2/10020	0,40

13

